

Wind3D 6000/10K

3D Scanning Wind Lidar



PRODUCT DESCRIPTION

- Based on the principle of optical coherence doppler frequency shift detection, the Wind3D 6000/10K 3D scanning wind lidar can realize the detection of three-dimensional wind field of the middle and lower troposphere (including the atmospheric boundary layer).
- Equipped with optical scanner of highly pointing accuracy, for 3D scanning detection (DBS/VAD/PPI/RHI/CAPP/LOS script scanning modes), the detect radius can be up to 12km (depending upon model and conditions).
- In order to meet complex wind measurement requirements such complex terrain wind field, wind turbine wake, remote virtual met tower at sea, and stereoscopic distribution of atmospheric pollutants, we have specially developed lidar 3D stereo scanning, virtual met tower, multi-lidar coordination, etc. Detection mode provide users with a full range of customized solutions and services.



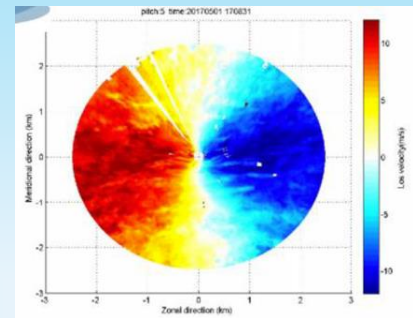
Product Display

Wind3D 6000/10K

3D Scanning Wind Lidar

Functional feature and advantages

- Remote and three-dimensional wind field detection system
- Wind Speed accuracy: wind cup level accuracy ($<0.1\text{m/s}$), and meet the international standard of IEC61400-12-1:2017
- Multi-scan modes: DBS/VAD/RHI/PPI/CAPPI/Virtual met tower etc., and can be programmed by script
- High resolution: 10Hz data refresh rate, 15m range resolution
- Flexible Deployment: small in size, light in weight and low in power consumption, makes it easy to build stations and transfer in the field.
- Unattended: remote networking data acquisition and equipment monitoring
- Strong Robustness: continuous and stable operation in the harsh inland, coastal and plateau environments



Wind3D10K PPI Scan

Technical Specifications

Specification	6000	10K
Laser Wavelength	1.5 μm , eye safety	
Radial detection	45m ~ 6,000m	60m ~ 12,000m
Range Resolution	15m/30m/60m/150m configurable	
Integration time	0.1s ~ 10s (configurable)	
Radial Wind Velocity Range	-37.5m/s ~ 37.5m/s	
Wind Velocity accuracy	$\leq 0.1\text{m/s}$	
Servo scanning accuracy	0.1°	
Scanning Modes	DBS/VAD/RHI/PPI/VOL/fixed point/CAPPI/Virtual tower stare(VTS)/multi-lidar measurement	
Data products	DBS/VAD wind profile, vertical airflow, RHI/PPI/CAPPI radial velocity field and inversion wind field, virtual met tower, wind turbine wake field, wake vortex and wind shear, cloud and aerosol backscattering intensity, online collaborative observation, GNSS position time, lidar status data, ground atmospheric temperature, humidity, air pressure data, etc.	
Weight	<130kg	<135kg
Dimensions	638 x 626 x 907mm	630 x 740 x 1,070mm
Operating Temperature	-40°C ~ 60°C	-40°C ~ 60°C



Qingdao Leice Transient Technology Co. Ltd
Web: www.leice-lidar.com

Delairco

Delairco Japan KK
Email: dj.sales@delairco.co.jp
Web: www.delairco.co.jp